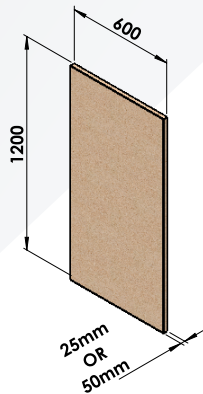


# GLASS PROTECTION



## Wall Installation -Adhesive

### Panels



### Tools

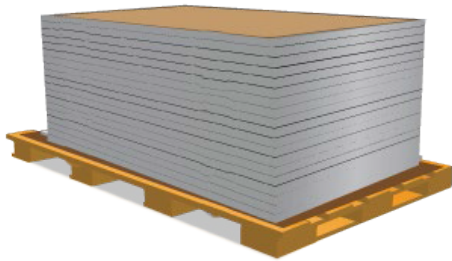


4mm  
Notched trowel

Recommended -  
CM 18



1.



Use pallet or clean surface to store panels prior to installation

2.



Mix CM18 using instructions on bag

3.



Apply CM18 to entire backside of panel using 4mm trowel

4.



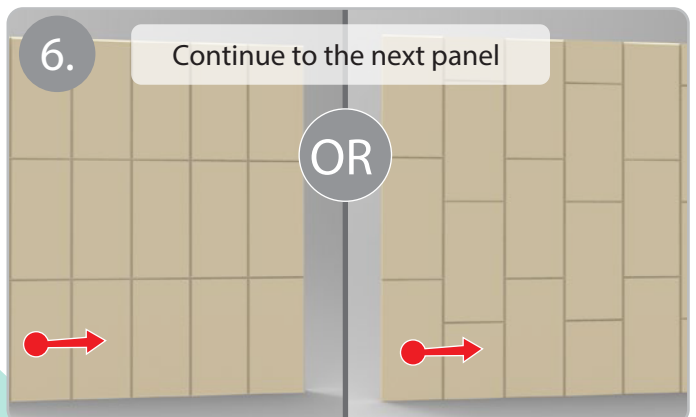
Lift and push against wall.  
Slide panel to position into place

5.



Apply pressure for a minimum of 4 seconds

6.



Continue to the next panel

OR